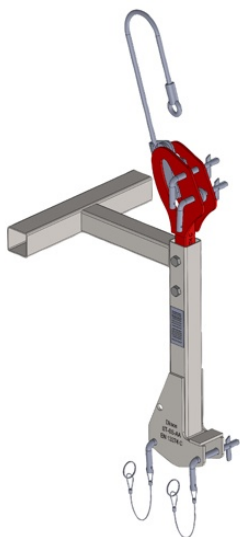


## Technical sheet

Ref. 880560

# Aluminium scaffolding fixing with 5m sling and block piece



Fixing kits allow roof scaffolds and guardrails to be used for safe work.

## FEATURES

Efficient, easy-to-assemble, light scaffolding solutions  
Not limiting in terms of space and assembly  
Suitable for any type of roof (tile, slate, zinc, sloping or flat, new or renovation) or for the installation of solar panels

## SPECIFICATIONS

Lenght (mm)	350
Width (mm)	400
Height (mm)	500
Weight (kg)	0

## Technical description

**Actions :** To work safely

**Trades :** Slate / Framework / Metal / Tile